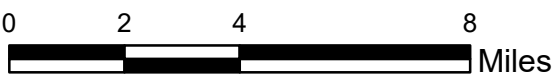


Legend

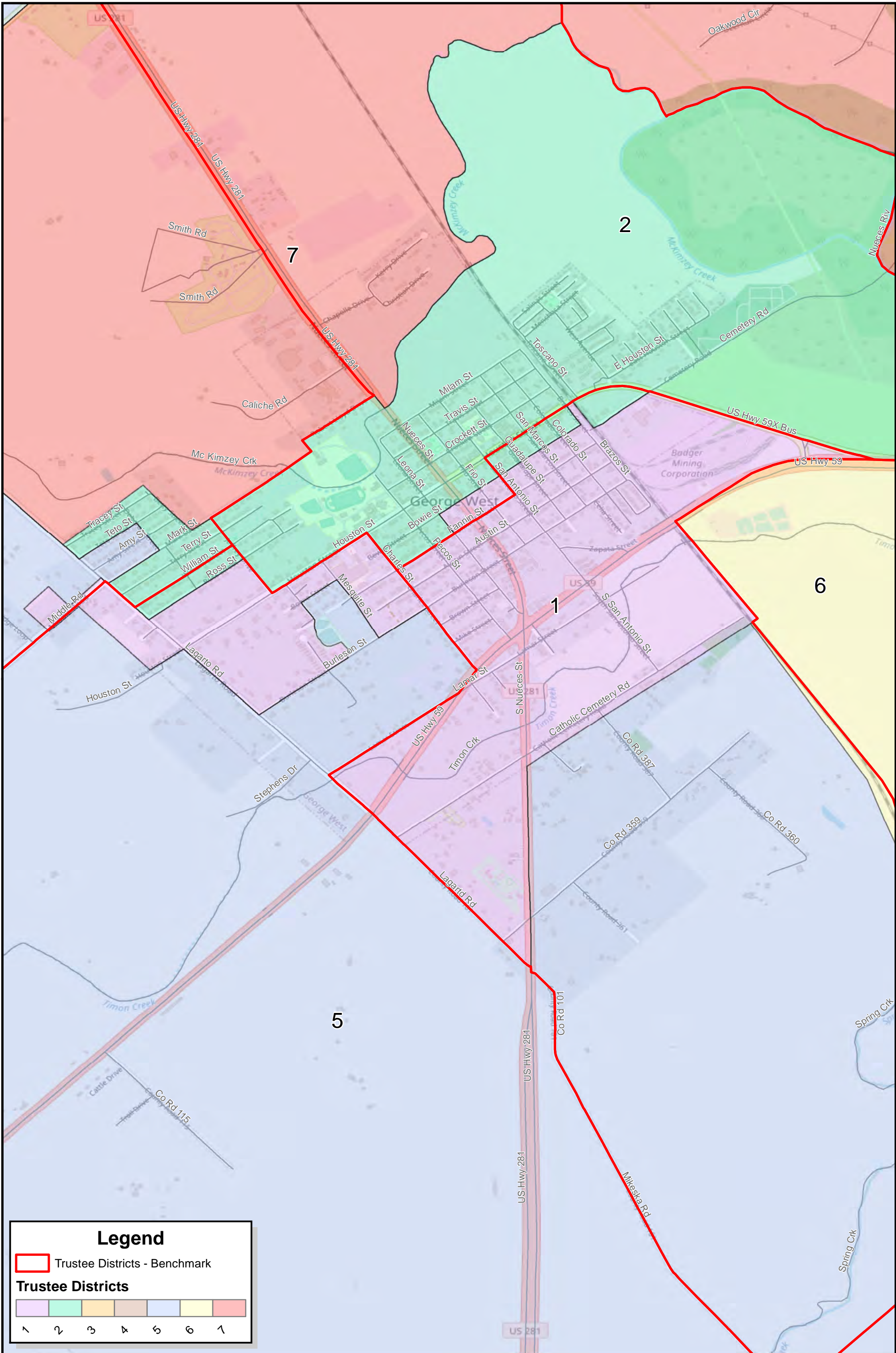
Trustee Districts - Benchmark

Trustee Districts

1	2	3	4	5	6	7



**George West ISD
Trustee Districts
Illustrative Plan 1**



Legend

Trustee Districts - Benchmark

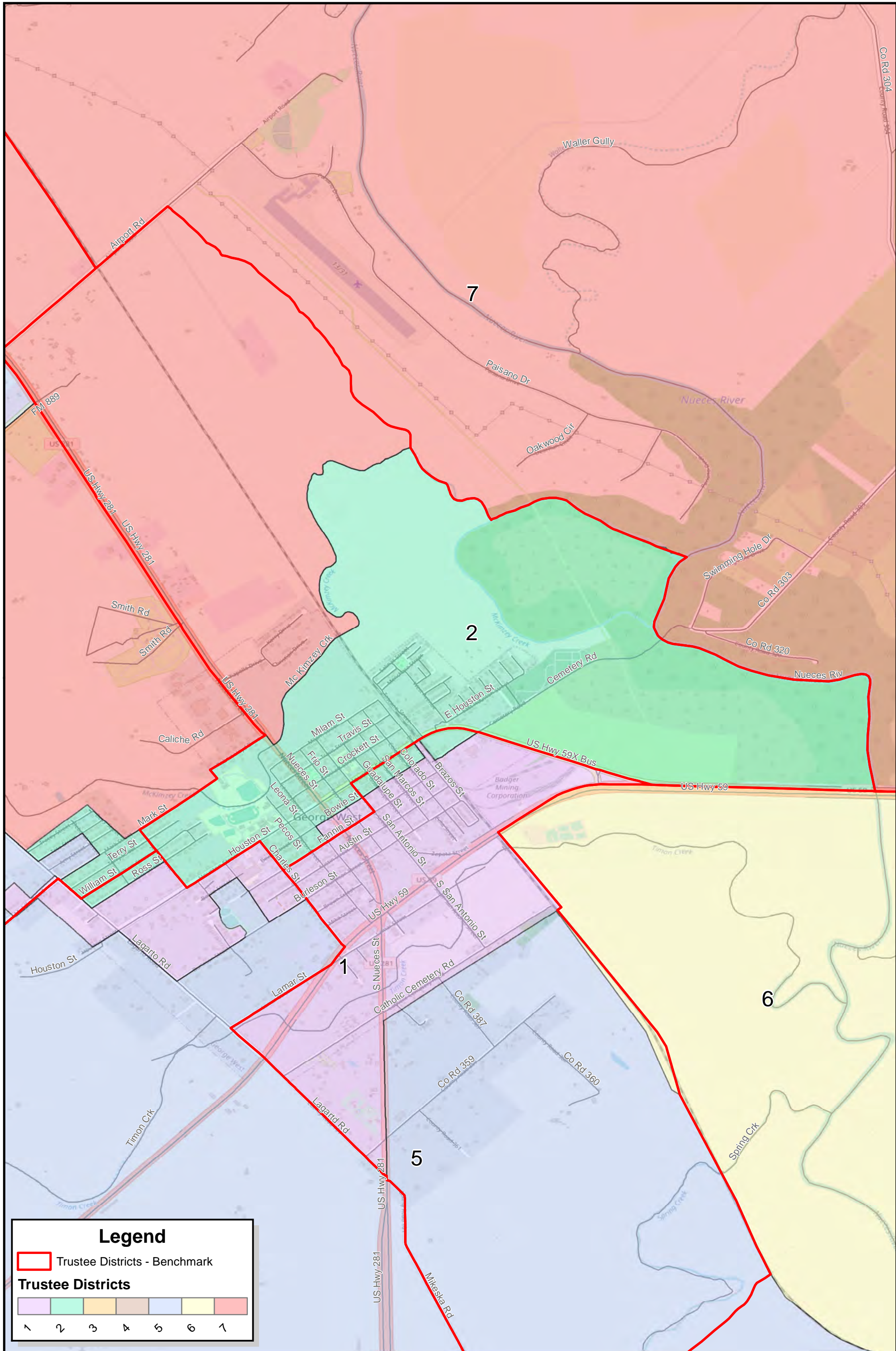
Trustee Districts

1	2	3	4	5	6

0 0.125 0.25 0.5 Miles

Created: 1/6/2022
Background Image: ESRI Open Street Map

George West ISD Trustee District 1 Illustrative Plan 1



Legend

Trustee Districts - Benchmark

Trustee Districts

1	2	3	4	5	6	7

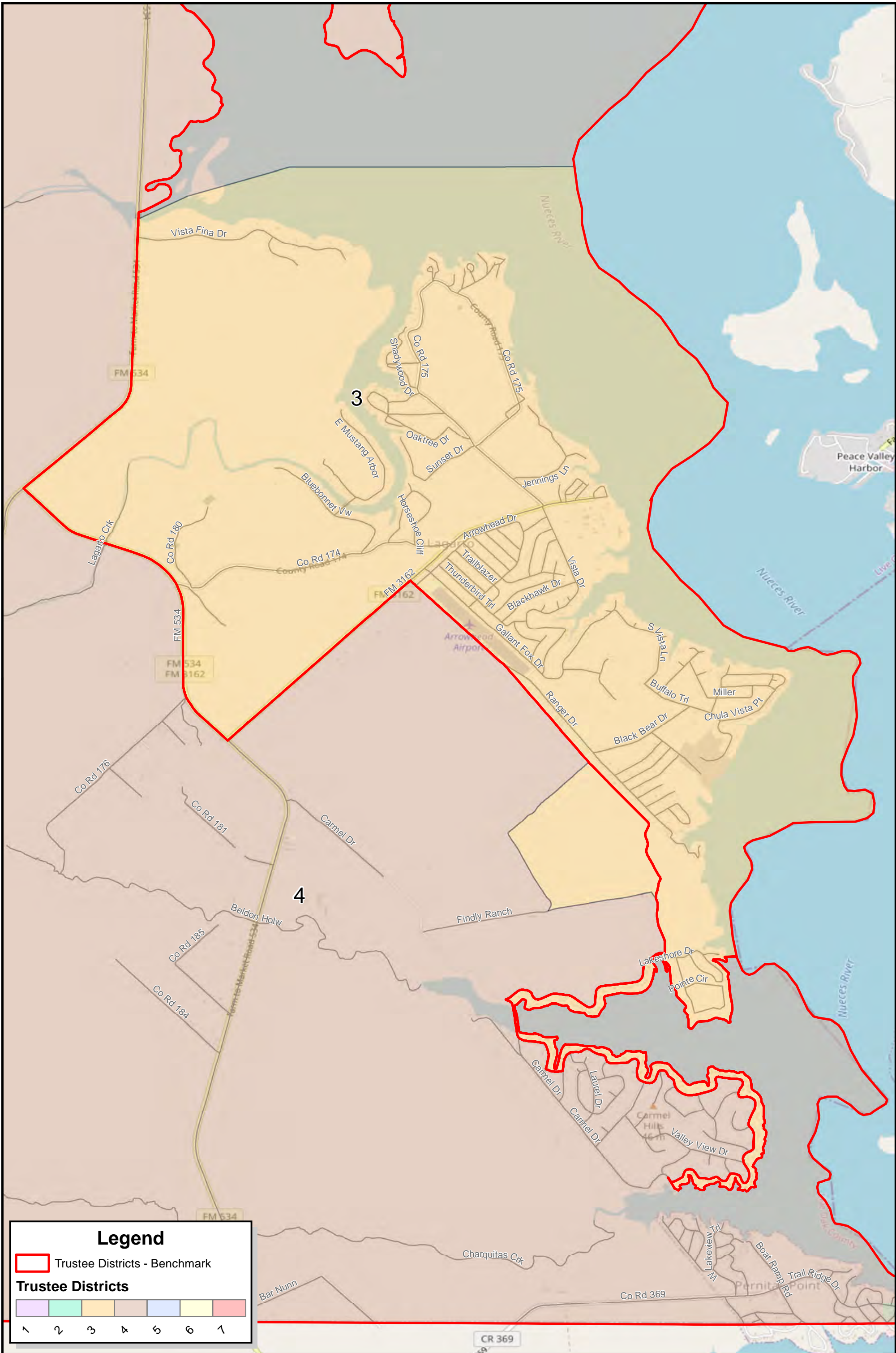
0 0.175 0.35 0.7
Miles

Created: 1/6/2022
 Background Image: ESRI Open Street Map

George West ISD Trustee District 2 Illustrative Plan 1

© 2021 Bickerstaff Heath Delgado Acosta LLP
 Data Source: Roads, Water and other features obtained from the 2020 Tiger/line files, U.S. Census Bureau





Legend

Trustee Districts - Benchmark

Trustee Districts

1	2	3	4	5	6	7	8

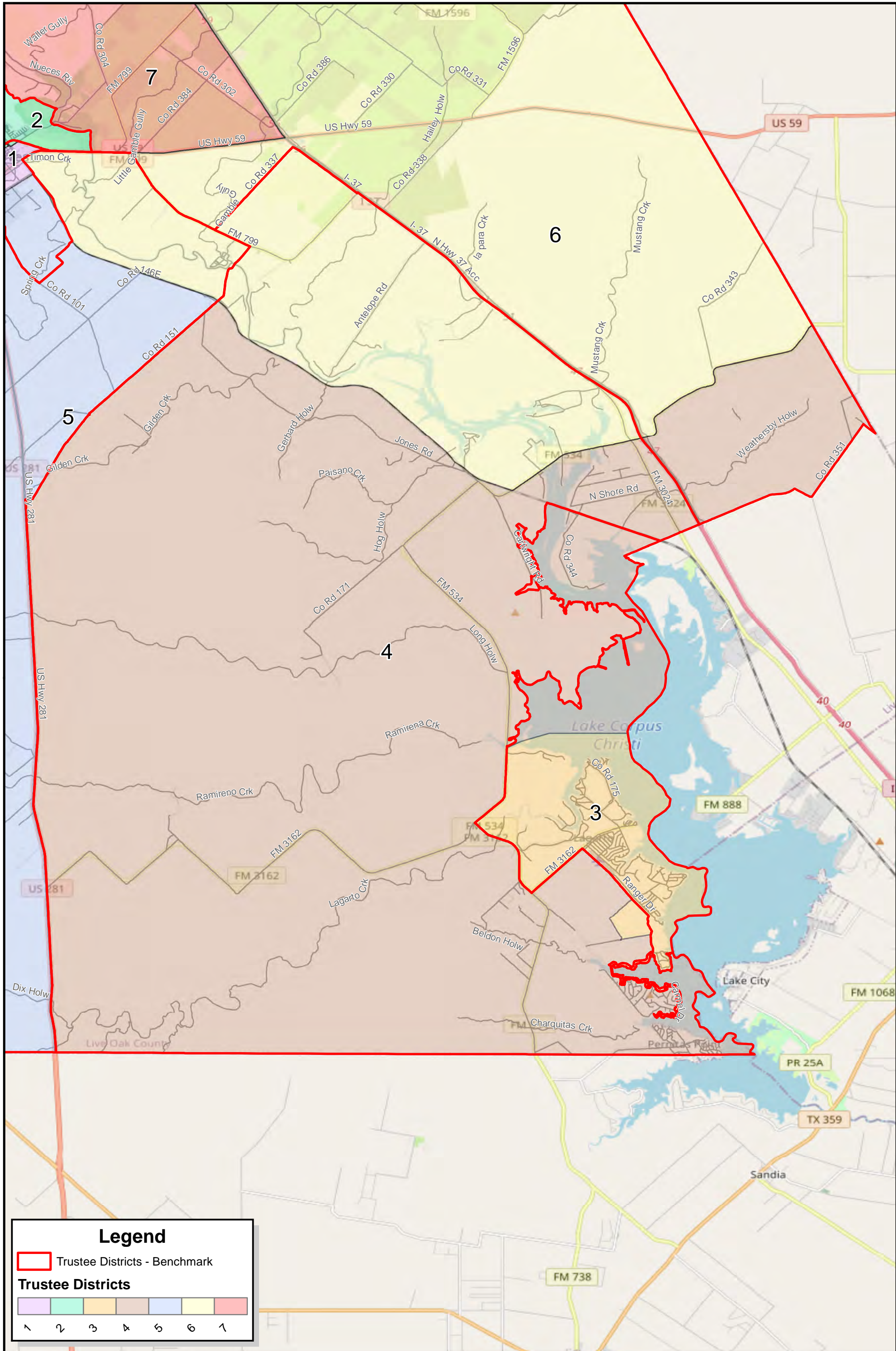
0 0.275 0.55 1.1
Miles

Created: 1/6/2022
 Background Image: ESRI Open Street Map

George West ISD Trustee District 3 Illustrative Plan 1

© 2021 Bickerstaff Heath Delgado Acosta LLP
 Data Source: Roads, Water and other features obtained from the 2020 Tiger/line files, U.S. Census Bureau





Legend

Trustee Districts - Benchmark

Trustee Districts

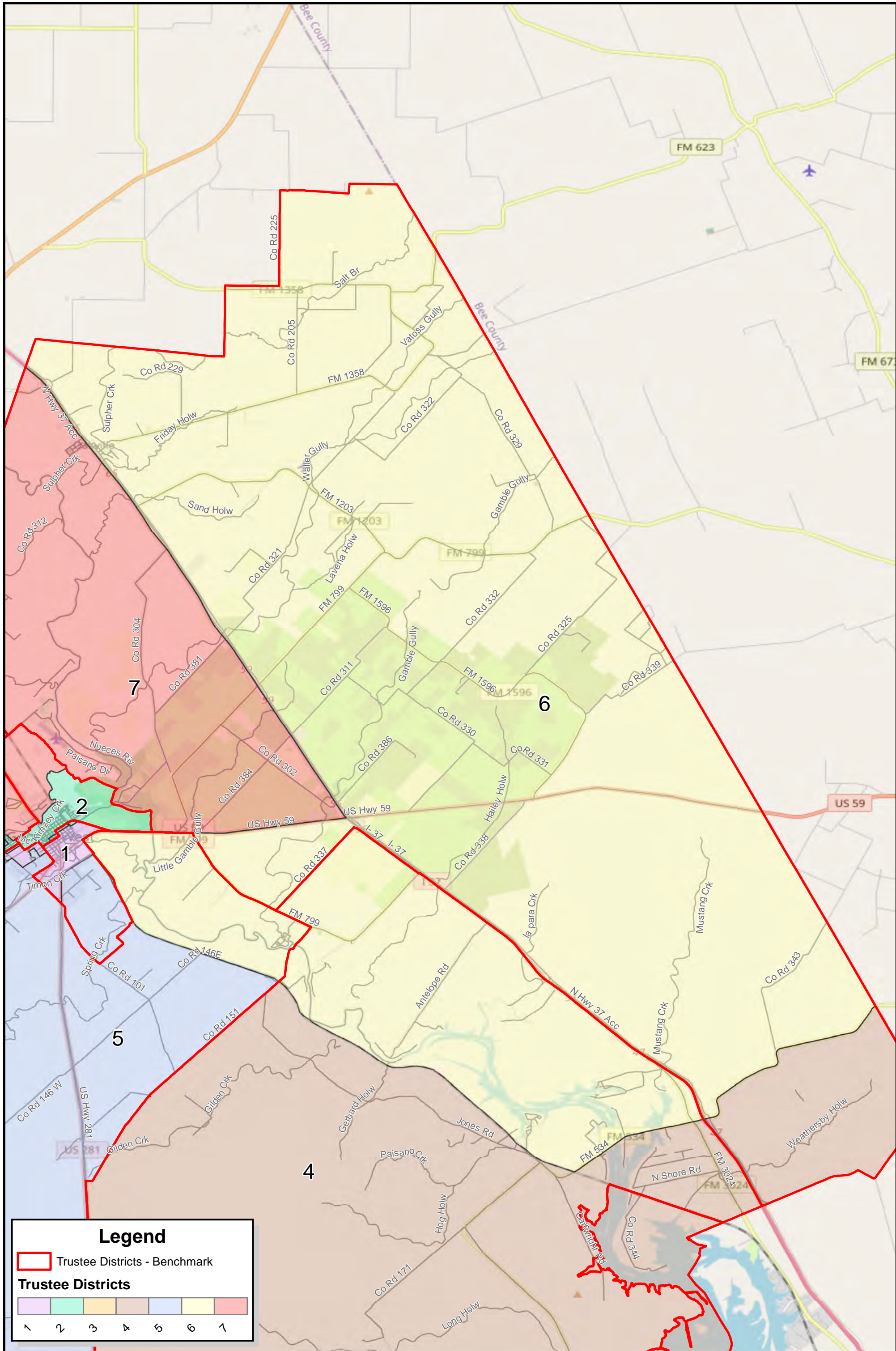
1	2	3	4	5	6	7
---	---	---	---	---	---	---

Miles

Created: 1/6/2022
 Background Image: ESRI Open Street Map

George West ISD Trustee District 4 Illustrative Plan 1





Legend

Trustee Districts - Benchmark

Trustee Districts

1	2	3	4	5	6	7

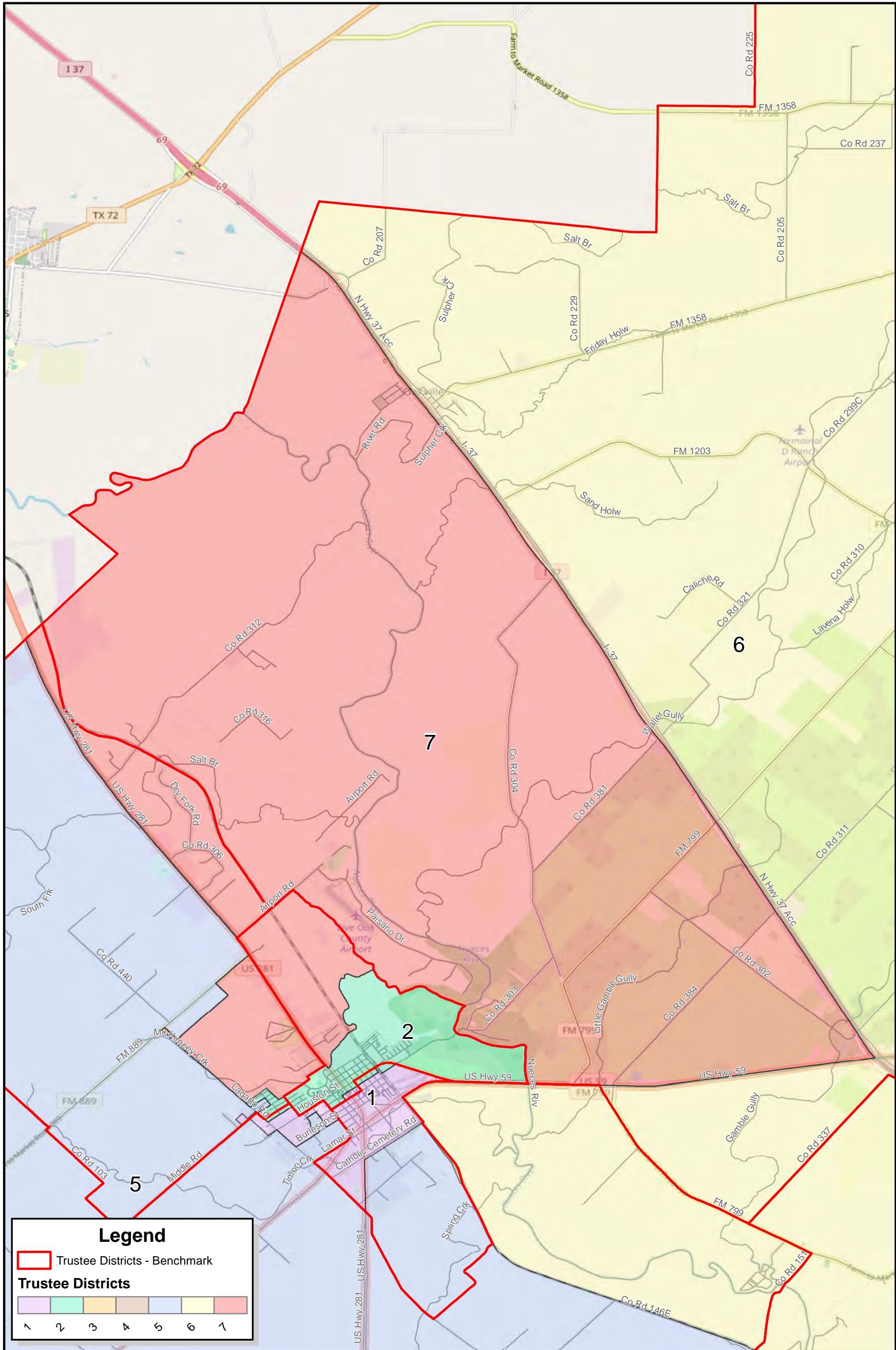
0
1
2
4
Miles

Created: 1/6/2022
 Background Image: ESRI Open Street Map

George West ISD Trustee District 6 Illustrative Plan 1

© 2021 Bickerstaff Heath Delgado Acosta LLP
 Data Source: Roads, Water and other features obtained from the 2020 Tiger/line files, U.S. Census Bureau





Legend

Trustee Districts - Benchmark

Trustee Districts

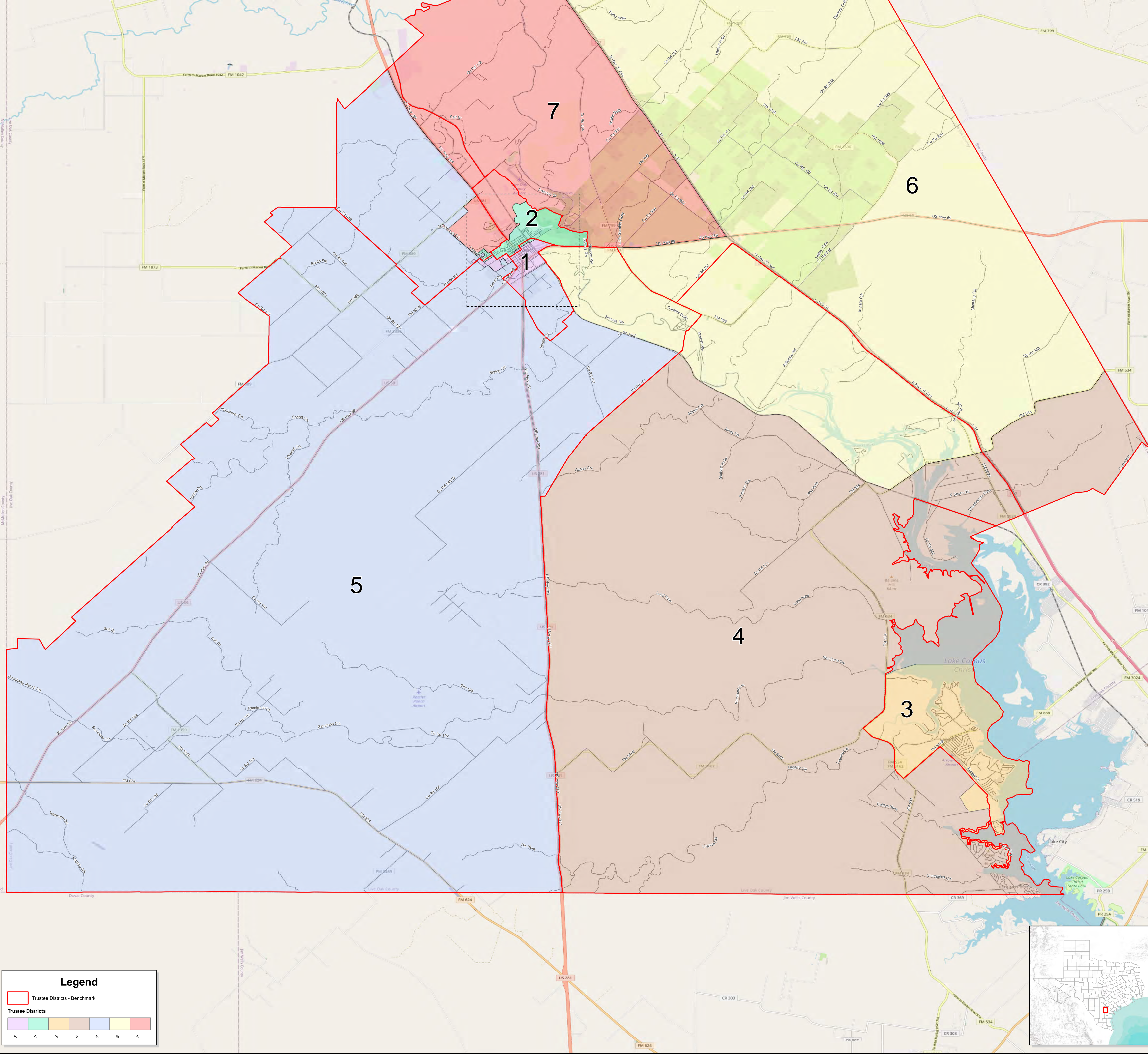
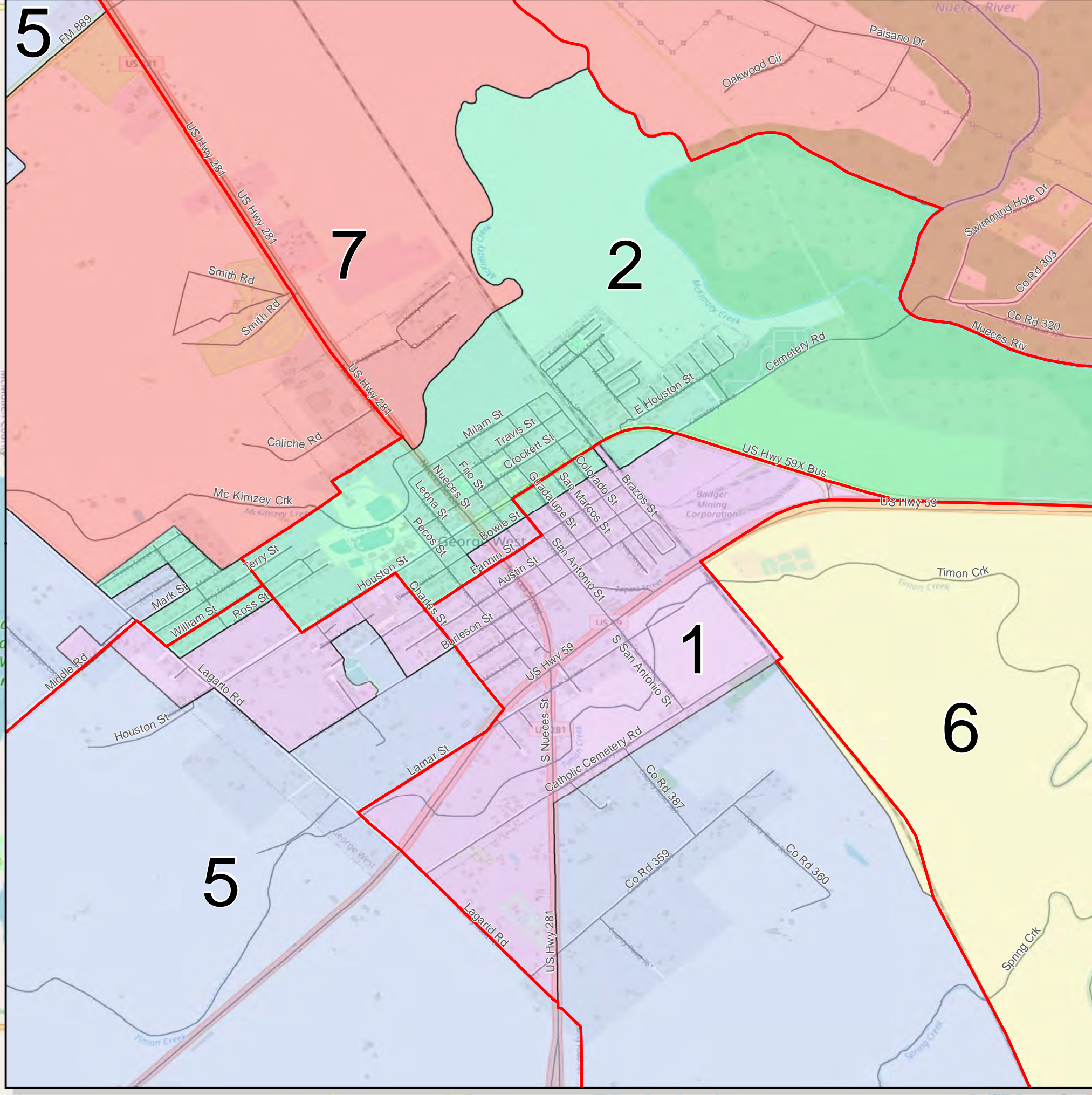
1	2	3	4	5	6	7

0 0.5 1 2
Miles

Created: 1/6/2022
 Background Image: ESRI Open Street Map

George West ISD Trustee District 7 Illustrative Plan 1





Legend

- Trustee Districts - Benchmark
- Trustee Districts



George West ISD Trustee Districts Illustrative Plan 1

© 2021 Bickerstaff Heath Delgado Acosta LLP
Data Source: Roads, Water and other features obtained from the 2020 Tiger/line files, U.S. Census Bureau



George West ISD Trustee Districts - Illustrative Plan 1



Demographics Report - Detailed 2020 Census Total Population

Plan Last Edited on: 1/6/2022 10:14:53 AM

District	Persons	Ideal Size	Deviation	Hispanic	Hispanic % of Total Population	ANGLO	Non-Hispanic Anglo % of Total Population	Black	Black % of Total Population	Asian	Asian % of Total Population	AM Indian Native	IND / NAT % TOT Pop.	Haw Pac. Isl.	HAW/ PAC % of Total Pop.	Other	Other % of Total Pop.	Two or More Races	Two or More Races % Tot Pop
1	893	927	-3.62%	619	69.32%	253	28.33%	4	0.45%	5	0.56%	2	0.22%	0	0.00%	1	0.11%	9	1.01%
2	896	927	-3.30%	591	65.96%	291	32.48%	1	0.11%	5	0.56%	0	0.00%	0	0.00%	1	0.11%	7	0.78%
3	972	927	4.90%	187	19.24%	743	76.44%	6	0.62%	5	0.51%	3	0.31%	0	0.00%	3	0.31%	25	2.57%
4	921	927	-0.60%	181	19.65%	688	74.70%	5	0.54%	1	0.11%	6	0.65%	0	0.00%	6	0.65%	34	3.69%
5	944	927	1.88%	254	26.91%	661	70.02%	7	0.74%	1	0.11%	0	0.00%	1	0.11%	0	0.00%	20	2.12%
6	932	927	0.59%	179	19.21%	723	77.58%	1	0.11%	3	0.32%	5	0.54%	0	0.00%	1	0.11%	20	2.15%
7	928	927	0.15%	361	38.90%	527	56.79%	4	0.43%	3	0.32%	6	0.65%	0	0.00%	0	0.00%	27	2.91%
TOTAL:	6,486			2,372	36.57%	3,886	59.91%	28	0.43%	23	0.35%	22	0.34%	1	0.02%	12	0.19%	142	2.19%

Ideal Size: 6486 / 7 = 927

Total Population: 6,486

Overall Deviation: 8.53%

Some percentages may be subject to rounding errors.

George West ISD Trustee Districts - Illustrative Plan 1

Demographics Report - Detailed 2020 Census Voting Age Population



Plan Last Edited on: 1/6/2022 10:15:13 AM

District	Total VAP	Hispanic VAP	% Hispanic VAP	Anglo VAP	% Anglo VAP	Black VAP	% Black VAP	Asian VAP	% Asian VAP	AM IND NATIVE VAP	% AM IND NATIVE VAP	HAW/PAC VAP	% HAW/PAC VAP	Other VAP	% Other VAP	Two or More Races VAP	% Two or more VAP
1	681	453	66.52%	213	31.28%	2	0.29%	4	0.59%	1	0.15%	0	0.00%	1	0.15%	7	1.03%
2	675	423	62.67%	239	35.41%	0	0.00%	5	0.74%	0	0.00%	0	0.00%	1	0.15%	7	1.04%
3	832	143	17.19%	648	77.88%	6	0.72%	5	0.60%	3	0.36%	0	0.00%	3	0.36%	24	2.88%
4	756	137	18.12%	579	76.59%	3	0.40%	1	0.13%	4	0.53%	0	0.00%	5	0.66%	27	3.57%
5	737	175	23.74%	543	73.68%	2	0.27%	1	0.14%	0	0.00%	1	0.14%	0	0.00%	15	2.04%
6	771	120	15.56%	627	81.32%	1	0.13%	3	0.39%	5	0.65%	0	0.00%	1	0.13%	14	1.82%
7	742	287	38.68%	418	56.33%	4	0.54%	2	0.27%	6	0.81%	0	0.00%	0	0.00%	25	3.37%
TOTAL:	5,194	1,738	33.46%	3,267	62.90%	18	0.35%	21	0.40%	19	0.37%	1	0.02%	11	0.21%	119	2.29%

* VAP - Voting Age Population

Some percentages may be subject to rounding errors.

Demographics Report - Summary 2020 Census Total Population

Plan Last Edited on: 1/6/2022 10:13:34 AM

District	Persons	Ideal Size	Deviation	Hispanic % of Total Population	Non-Hispanic White % of Total Population	Non-Hispanic Black % of Total Population	Non-Hispanic Asian % of Total Population	Non-Hispanic Other % of Total Population
1	893	927	-3.62%	69.32%	28.33%	0.45%	0.56%	1.34%
2	896	927	-3.30%	65.96%	32.48%	0.11%	0.56%	0.89%
3	972	927	4.90%	19.24%	76.44%	0.62%	0.51%	3.19%
4	921	927	-0.60%	19.65%	74.70%	0.54%	0.11%	4.99%
5	944	927	1.88%	26.91%	70.02%	0.74%	0.11%	2.22%
6	932	927	0.59%	19.21%	77.58%	0.11%	0.32%	2.79%
7	928	927	0.15%	38.90%	56.79%	0.43%	0.32%	3.56%

TOTAL: 6,486 36.57% 59.91% 0.43% 0.35% 2.73%

Ideal Size: 6486 / 7 = 927

Total Population: 6,486

Overall Deviation: 8.53%

Some percentages may be subject to rounding errors.

Demographics Report - Summary 2020 Census Voting Age Population

Plan Last Edited on: 1/6/2022 10:14:35 AM

District	Total VAP*		Hispanic % of Total VAP	Non-Hispanic Anglo % of Total VAP	Non-Hispanic Black % of Total VAP	Non-Hispanic Asian % of Total VAP	Non-Hispanic Other % of Total VAP
1	681		66.52%	31.28%	0.29%	0.59%	1.32%
2	675		62.67%	35.41%	0.00%	0.74%	1.19%
3	832		17.19%	77.88%	0.72%	0.60%	3.61%
4	756		18.12%	76.59%	0.40%	0.13%	4.76%
5	737		23.74%	73.68%	0.27%	0.14%	2.17%
6	771		15.56%	81.32%	0.13%	0.39%	2.59%
7	742		38.68%	56.33%	0.54%	0.27%	4.18%
TOTAL:	5,194		33.46%	62.90%	0.35%	0.40%	2.89%

* VAP - Voting Age Population

Some percentages may be subject to rounding errors.